

# SHALLOW BASES

## RELATED STANDARDS

Shallow bases are designed in compliance with the mechanical and environmental requirements of FAA AC 150/5345-42 specifications

Shallow bases can withstand the loading and environmental stress requirements in FAA AC 150/5345-46

## APPLICATIONS

- Shallow bases are used to install inset lights in flexible and non-flexible pavements, by means of the glue in method.

## IMPORTANT FEATURES

- Standard size is 15 cm deep
- For installation using Conducts already Buried in the layout to lead the Secondary Cables a Shallow Base with Bottom Entry is used.
- For using Saw Cuts made in the layout to lead the Secondary Cables a Shallow Base with Side Entry is used.
- Quick and low cost installation of Airfield Lighting Inset Fittings in an already existing layout.
- Easy upgrade and modification of existing Lighting System (especially with side entry shallow bases).
- Each shallow base is supplied equipped with its fixing studs.

## MATERIALS & FINISH

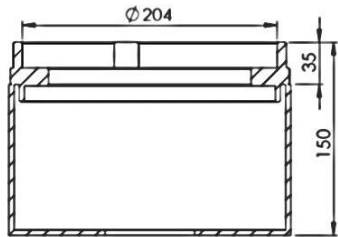
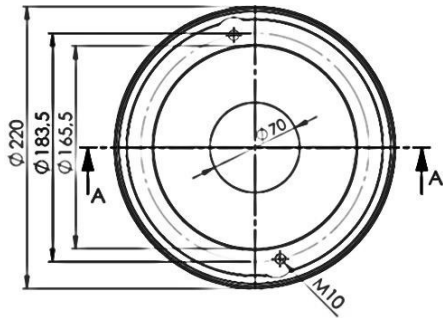
- 8" Light shallow bases are made of hot galvanized steel.
- 12" Light shallow bases are made of cast aluminum
- All studs and nuts are stainless steel.



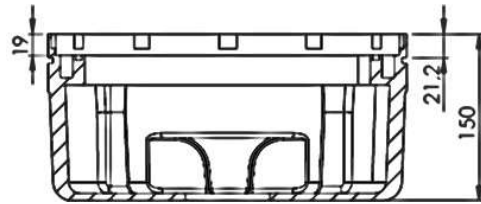
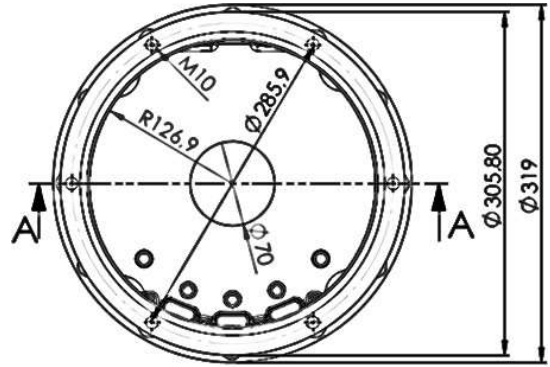
8" Light Shallow Base



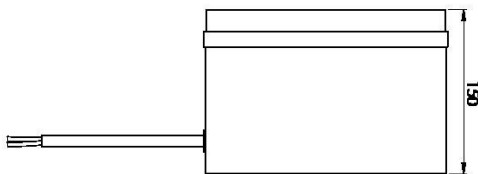
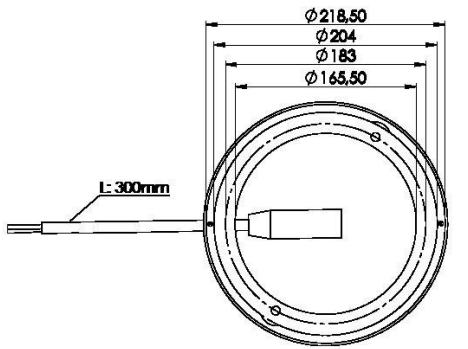
12" Light Shallow Base



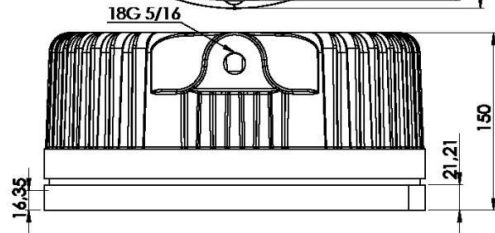
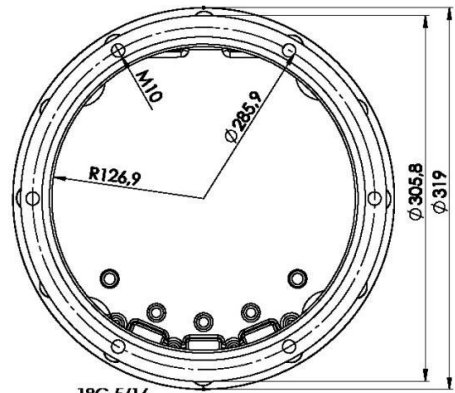
8" light shallow base with bottom entry



12" light shallow base with bottom entry



8" light shallow base with side entry



12" light shallow base with side entry

# L-867, L-868 BASES

## RELATED STANDARDS

FAA AC 150/5345-42 L-867 & L-868

## APPLICATIONS

### FAA L-867

- Type L-867 Bases and extensions for applications subject to occasional light vehicular loading but no aircraft or other heavy vehicular loading.
- For ground fixing of elevated and inset lights, for underground housing of isolating transformers
- Signs
- Junction Box

### FAA L-868

- Type L-868 Bases and extensions for applications subject to aircraft and other heavy vehicular loading.
- For ground fixing of inset lights, for underground housing of isolating transformers
- Junction Box

## IMPORTANT FEATURES

- Standard bases provided as Class IA, galvanized steel unless otherwise specified.
- Available diameters;
  - Size A - 8 inch (203 mm),
  - Size B - 12 inch (305 mm),
  - Size C - 15 inch (381 mm)
- Flange rings are attached to side-walls with continuous watertight weld
- Internal and external grounding straps are standard
- Light bases can be provided with an optional plywood cover for shipping and ease of installation
- 12 inch to 8 inch and 15 inch to 12 inch adapter rings are available to match inset lights and bases of different sizes
- Light bases can be provided with a special jig for leveling and stabilization during installation

## MATERIALS & FINISH

Deep bases are made of hot galvanized steel,  
Shallow bases are cast aluminum



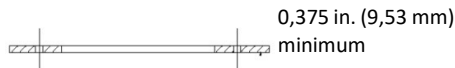
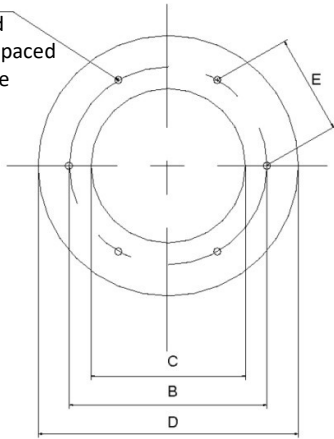
L-868



L-867

### Flange, Type L-867

3/8"-16 tapped holes, equally spaced on 'B' bolt circle

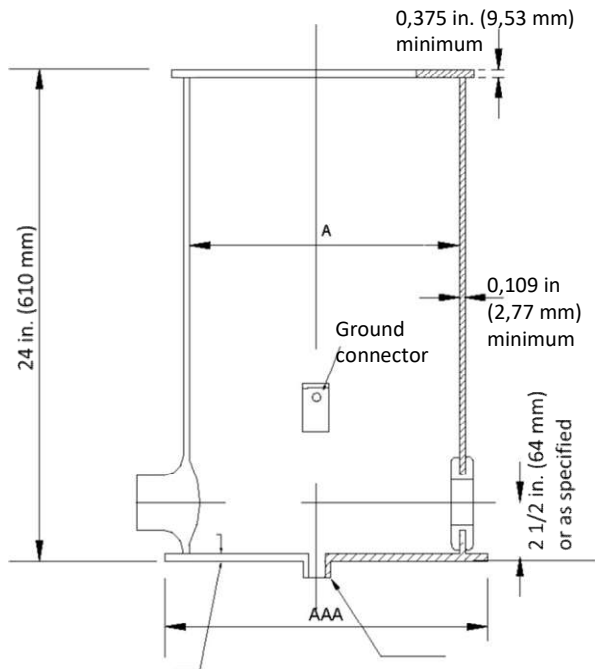


### Flange Dimensions, L-867

Inches			
Sizes	Size B	Size D	Size E
Nom.Dia.	<b>12"</b>	<b>16"</b>	<b>24"</b>
D, outside dia.	13,500	17,375	24,000
B, bolt circle	10,250	14,250	21,500
C, inside dia	9,250	12,375	20,000
E, chord	5,125	7,125	11,125

Centimeters			
Sizes	Size B	Size D	Size E
Nom.Dia.	<b>12"</b>	<b>16"</b>	<b>24"</b>
D, outside dia.	34,290	44,133	60,960
B, bolt circle	26,035	36,195	54,610
C, inside dia	23,495	31,433	50,800
E, chord	13,018	18,098	28,258

### Body, Type L-867

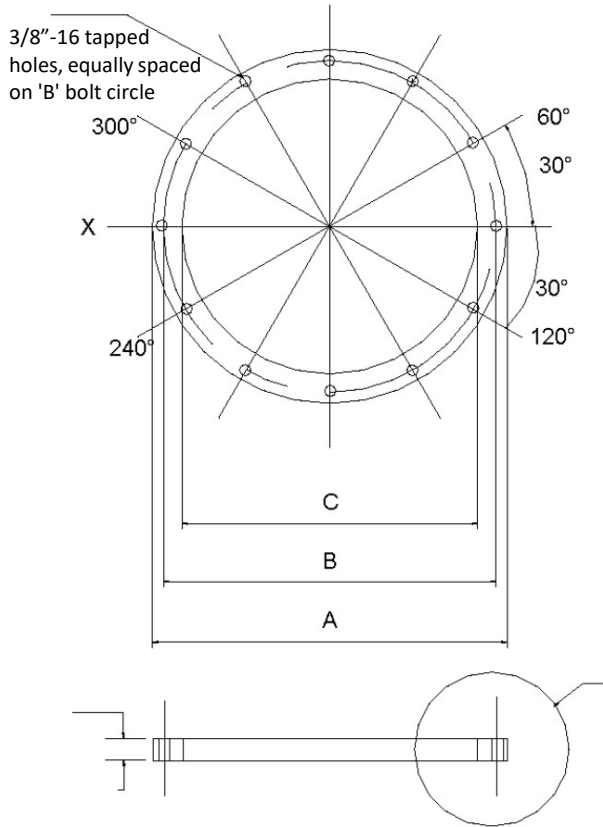


### Body Dimensions, L-867

Inches			
Sizes	Size B	Size D	Size E
Nom.Dia.	<b>12"</b>	<b>16"</b>	<b>24"</b>
A, inside dia.	12,250	16,250	22,500
AAA, max bottom dia.	13,000	17,375	24,000

Centimeters			
Sizes	Size B	Size D	Size E
Nom.Dia.	<b>12"</b>	<b>16"</b>	<b>24"</b>
A, inside dia.	31,115	41,275	57,150
AAA, max bottom dia.	33,020	44,133	60,960

### Flange, Type L-868

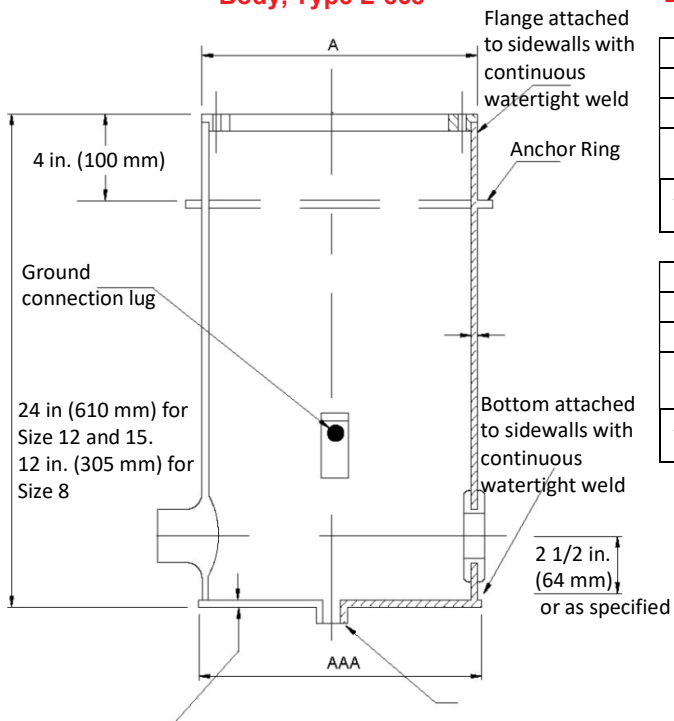


### Flange Dimensions, L-868

Inches			
Sizes	Size A	Size B	Size C
Nom.Dia.	8"	12"	15"
A, outside dia.	8,500	12,500	15,500
B, bolt circle	7,250	11,250	14,250
C, inside dia	6,500	10,000	13,000

Centimeters			
Sizes	Size A	Size B	Size C
Nom.Dia.	8"	12"	15"
D, outside dia.	21,590	31,750	39,370
B, bolt circle	18,415	28,575	36,195
C, inside dia	16,510	25,400	33,020

### Body, Type L-868



### Body Dimensions, L-868

Inches			
Sizes	Size A	Size B	Size C
Nom.Dia.	8"	12"	15"
A, inside dia.	8,500	12,500	15,500
AAA, max bottom dia.	9,500	13,500	16,500

Centimeters			
Sizes	Size A	Size B	Size C
Nom.Dia.	8"	12"	15"
A, inside dia.	21,59	31,75	39,37
AAA, max bottom dia.	24,13	34,29	41,91